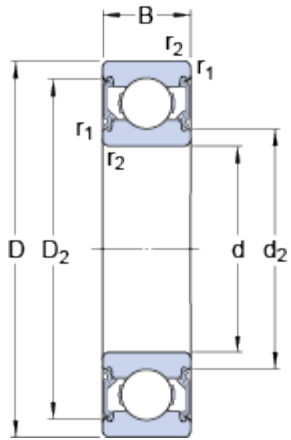


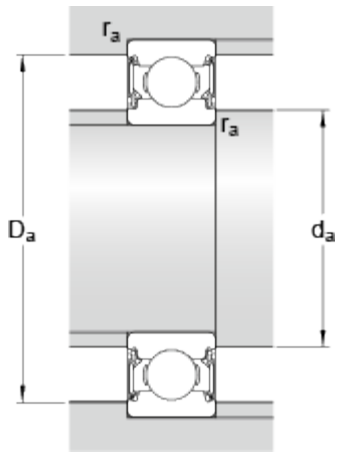
# 6202-2RSH

## Dimensions



d	15	mm
D	35	mm
B	11	mm
d <sub>2</sub>	18.6	mm
D <sub>2</sub>	30.5	mm
r <sub>1,2</sub>	min. 0.6	mm

## Dimensions d'appui



d <sub>a</sub>	min. 19.2	mm
d <sub>a</sub>	max. 19.4	mm
D <sub>a</sub>	max. 31.3	mm
r <sub>a</sub>	max. 0.6	mm

## Données de calcul

Charge dynamique de base	C	8.06	kN
Charge statique de base	C <sub>0</sub>	3.75	kN
Limite de fatigue	P <sub>u</sub>	0.16	kN
Vitesse limite		13000	r/min
Coefficient de calcul	k <sub>r</sub>	0.025	
Coefficient de calcul	f <sub>0</sub>	13	

## Masse

Masse du roulement		0.046	kg
--------------------	--	-------	----