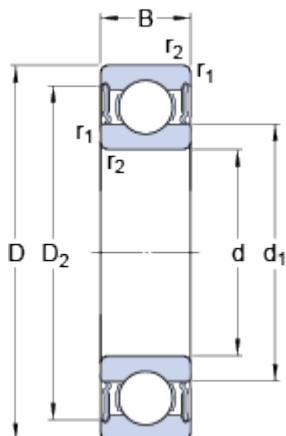


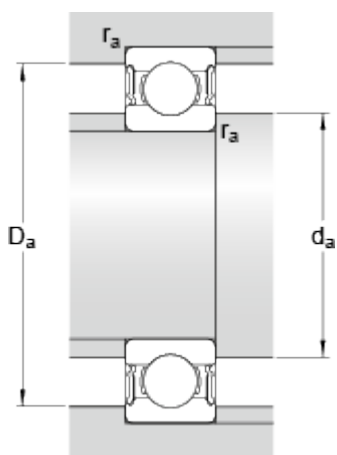
# 6308-2RS1

## Dimensions



d	40	mm
D	90	mm
B	23	mm
d <sub>1</sub>	56.11	mm
D <sub>2</sub>	77.7	mm
r <sub>1,2</sub>	min. 1.5	mm

## Dimensions d'appui



d <sub>a</sub>	min. 49	mm
d <sub>a</sub>	max. 56	mm
D <sub>a</sub>	max. 81	mm
r <sub>a</sub>	max. 1.5	mm

## Données de calcul

Charge dynamique de base	C	42.3	kN
Charge statique de base	C <sub>0</sub>	24	kN
Limite de fatigue	P <sub>u</sub>	1.02	kN
Vitesse limite		5000	r/min
Coefficient de calcul	k <sub>r</sub>	0.03	
Coefficient de calcul	f <sub>0</sub>	13.2	

## Masse

Masse du roulement		0.65	kg
--------------------	--	------	----