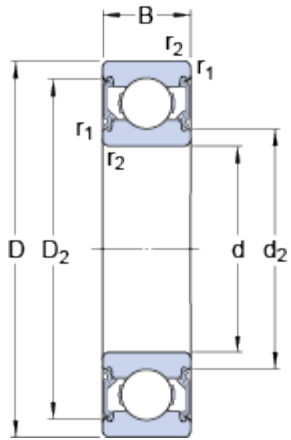


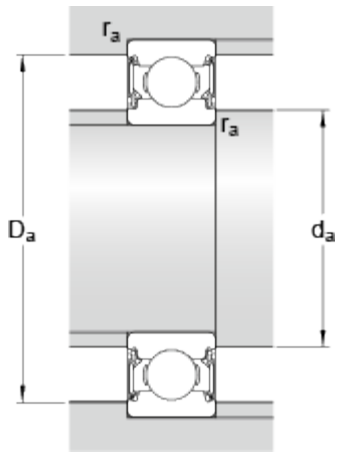
6205-2RSH

Dimensions



d	25	mm
D	52	mm
B	15	mm
d ₂	31.3	mm
D ₂	46.21	mm
r _{1,2}	min. 1	mm

Dimensions d'appui



d _a	min. 30.6	mm
d _a	max. 31.5	mm
D _a	max. 46.4	mm
r _a	max. 1	mm

Données de calcul

Charge dynamique de base	C	14.8	kN
Charge statique de base	C ₀	7.8	kN
Limite de fatigue	P _u	0.335	kN
Vitesse limite		8500	r/min
Coefficient de calcul	k _r	0.025	
Coefficient de calcul	f ₀	14	

Masse

Masse du roulement		0.13	kg
--------------------	--	------	----